

PRIORITY OF TREATMENT - DOWNSTREAM TRUSS

	Upper Framing and Roof System								Truss System								
	P ₂	P _{1A}	P _{1B}	Rafter Ft.	Upper Lat. Bracing	Tie Beams	Long. Knee Braces	Trans. Knee Braces	Top Chord, Middle	Top Chord, Right	L ₂ - U ₂	L ₃ - U ₃	L ₄ - U ₄	Bot. Chord, L ₃ - L ₄	Bot. Chord, L ₂ - L ₃	Matched Wedges in Verticals	
Condition	Previous lap repair with 2-1/2" bolts is relatively weak.	Fresh vertical cracks on west face.	Vertical Splits, some fresh. Previous lap repair with lags.	Evidence of Powder Post Beetles Throughout	Lack of lateral bracing	Several failed connections at ends. Weak hold down detail (form ties). Evidence of powder post beetles in all		Separated brace at Post P ₂	Weak spiked end connections.	Complete failure at west end of this member and splice due to insect infestation.	Complete failure at east end of this member and splice due to insect infestation.	Longitudinal shrinkage splits on outside of tail.	Longitudinal shrinkage splits on outside of tail.	Some fresh cracks. Tail inside face is split off.	Insufficient "let" detail at first diagonal. Horizontal shear failure along top face.	Insufficient "let" detail at first diagonal. Lack of adequate horizontal shear resistance.	Evidence of powder post beetles common in many.
Priority of Treatment	2	2	2	1	1	2	1	1	2	2	1	1	2	2	2	1	
Description	Replace in kind	Replace in kind	Replace in kind	Insecticide Treatment	Add Supplemental knee bracing - similar to Gifford Bridge	Improve connection resistance at end of tie beam. Insecticide Treatment for all. Replace tie beam at P ₂ in kind.	Shim repair existing brace.	Improve connection resistance with the use of lag screws.	Replace in kind with one piece. May need to modify scarf for new lap joint at left portion of chord to remain.		Stitch repair splits.	Stitch repair splits.	Replace in kind	Replace in kind with longer chord extensions.	Replace in kind with longer chord extensions.	Insecticide Treatment	
Photo ID	AA	BB	CC	DD	EE	FF	GG	HH	II		JJ		KK	LL	MM	NN	

LEGEND

Priority of Treatment

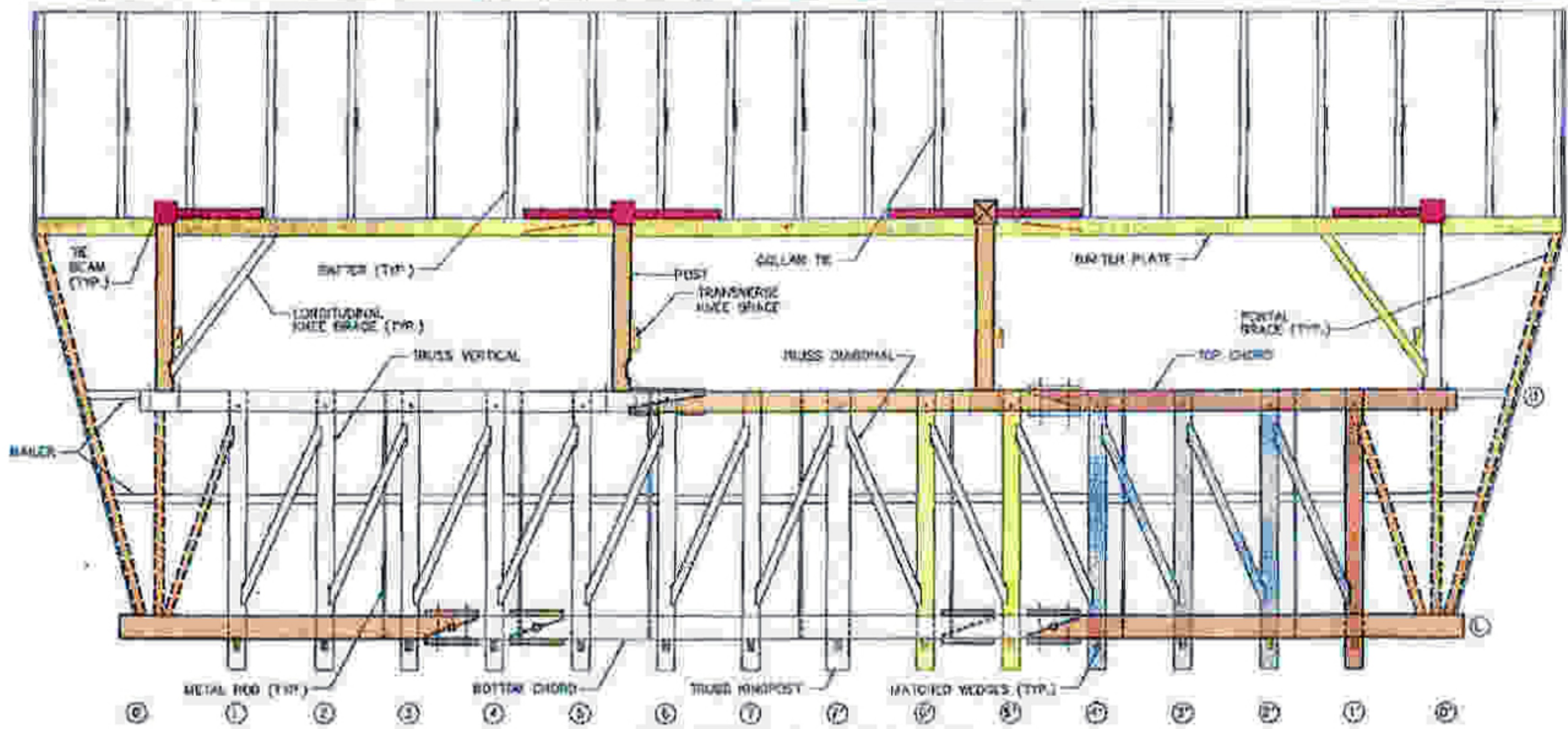
- 1 = Retain and repair
- 2 = Replace in kind
- 3 = Replace in kind and add supplemental

Truss Elevation

- Members thought to be original
- Proposed member replacement
- Proposed supplemental bracing
- Members replaced in kind for bottom chord replacement (lower portions only at portal truss)

Legend

- P = Vertical Post above Truss
- U = Upper Chord
- L = Lower Chord
- # = Panel Point Location



DOWNSTREAM TRUSS ELEVATION
SCALE: 1/4" = 1'-0"
(LOOKING DOWNSTREAM)
(SHEATHING AND ROOF BOARDS NOT SHOWN)

Figure 9.2.1
Priority of Treatment - Downstream Truss